

# How to access My Midland National website



A **Sammons** Financial Company

Issued by Midland National® Life Insurance Company

Visit the website at [my.MidlandNational.com](https://my.MidlandNational.com)

You can access your contract information 24 hours a day, seven days a week.

- Annual statements
- Contract values
- Current interest rates
- Notification of contract events
- Transaction history
- Access to tax documents

Follow these five easy steps to access my.MidlandNational.com today.

## Step 1

Username

Password

Login

[Forgot username](#) | [Forgot password](#)

[Don't have an account?](#)

Register

From your internet browser go to my.MidlandNational.com. If you have not registered, click on **Login**, then **Register** at the bottom of the login window.

If you have already registered, please enter your username and password, and go to step 5.

## Step 2

Create new account

Registration

What description best describes you?

☐ I am a Policyholder ☐ I am a Financial Professional

Policy or Contract Number

Policy or Contract Number

Identification Type

☒ SSN ☐ TIN

Enter SSN

Next Step

Select "Policyowner" and enter your policy number and Social security number, and click **Next Step**.

## Step 3

Create new account

Registration

Username

At least 8 characters (no special characters or spaces)

Email Address

Confirm Email Address

Security Question 1

Security Answer 1

Security Question 2

Security Answer 2

Password

Confirm Password

☐ I'm not a robot

Register

You will be prompted to set up security questions and a password. Please fill in all the required fields and click **Register**.

## Step 4

## Registration Successful

Your login was successfully created.

First Name:

Last Name:

Username:


Email Address:

You can now login to the Midlandnational.com website.

Login

A registration confirmation page will appear.  
Click **Login** to access the Midland National website.

## Step 5



[Search](#)
[Agent Homepage](#)
[My Profile](#)
[Logout](#)

Welcome [\[Name\]](#)

[Home](#) | [My Life Insurance](#)

Sign up for electronic document delivery of your variable Annuity product documents >

Sign up for electronic document delivery of your variable Life product documents >

Accounts

Inbox 1

Good Morning

## What would you like to do today?

Search Policies

Search by policy number, policy type, annuitant name, or insured name

### Life Summary

Jul 24, 2020

Total Death Benefit

\$2,000,000.00

Term

Insured

Death Benefit

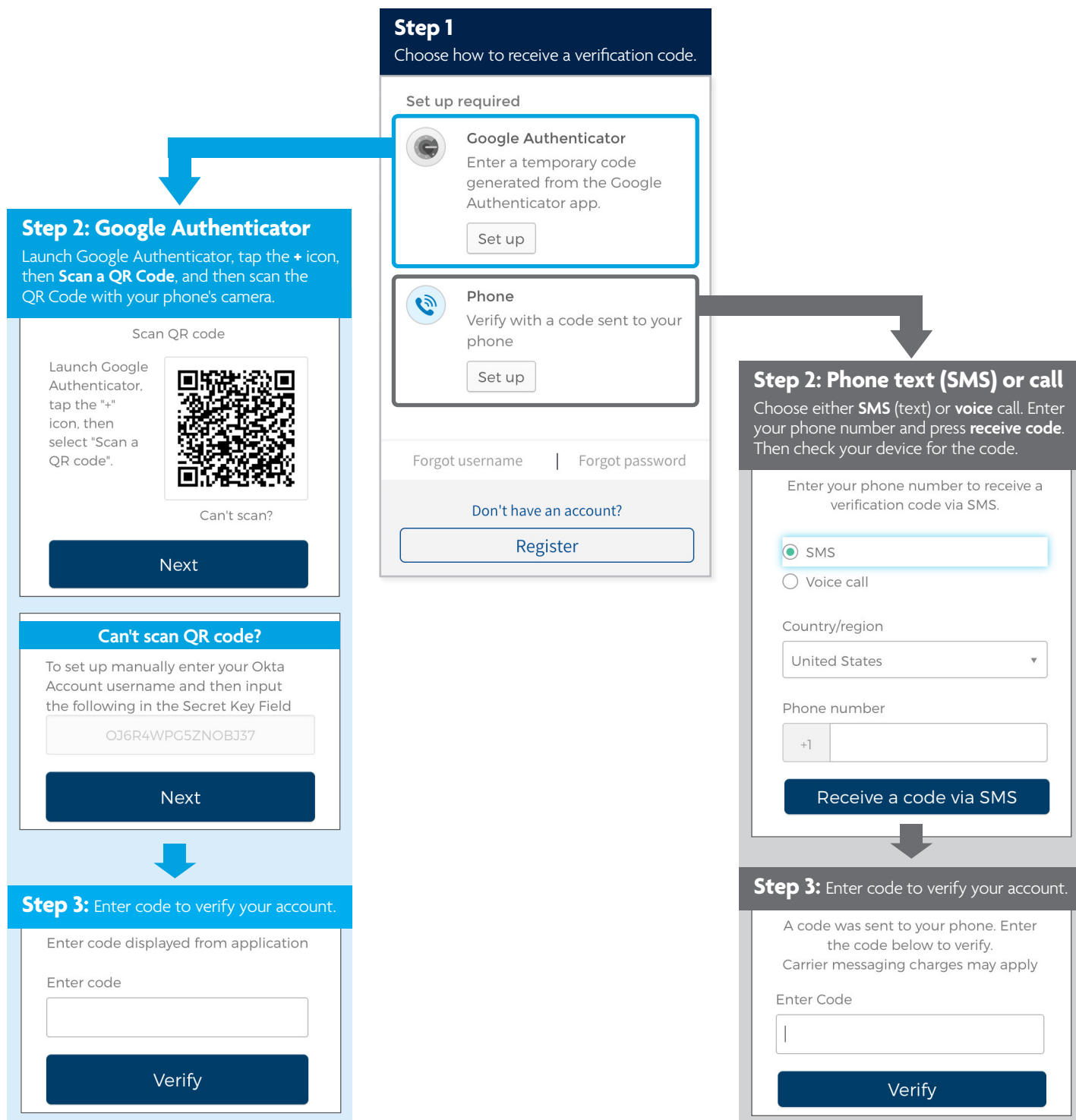
Congratulations you have successfully logged into the client website.



Sammons Financial® is the marketing name for Sammons® Financial Group, Inc.'s member companies, including Midland National® Life Insurance Company. Annuities and life insurance are issued by, and product guarantees are solely the responsibility of, Midland National Life Insurance Company.

# Verification code at login for MidlandNational.com

To protect our clients and financial professionals' personal data when logging into your account, we've added an extra layer of security to help confirm the user's identity. The verification code process will occur on the **first login to a device** (PC, tablet, mobile phone, etc.) or **if you haven't accessed your account for more than 90 days**.



Should you have any questions or concerns please feel free to contact us at:

**Annuity Customer Contact**

AnnuityCorrespondence@sfgmembers.com

(877) 586-0244

**Life Customer Contact**

LifeCorrespondence@sfgmembers.com

(800) 923-3223

Office hours are 7:30 a.m. to 5:00 p.m. (Central Time) Monday through Thursday and 7:30 a.m. to 12:30 p.m. (Central Time) on Friday.



Sammons Financial® is the marketing name for Sammons® Financial Group, Inc.'s member companies, including Midland National® Life Insurance Company. Annuities and life insurance are issued by, and product guarantees are solely the responsibility of, Midland National Life Insurance Company.